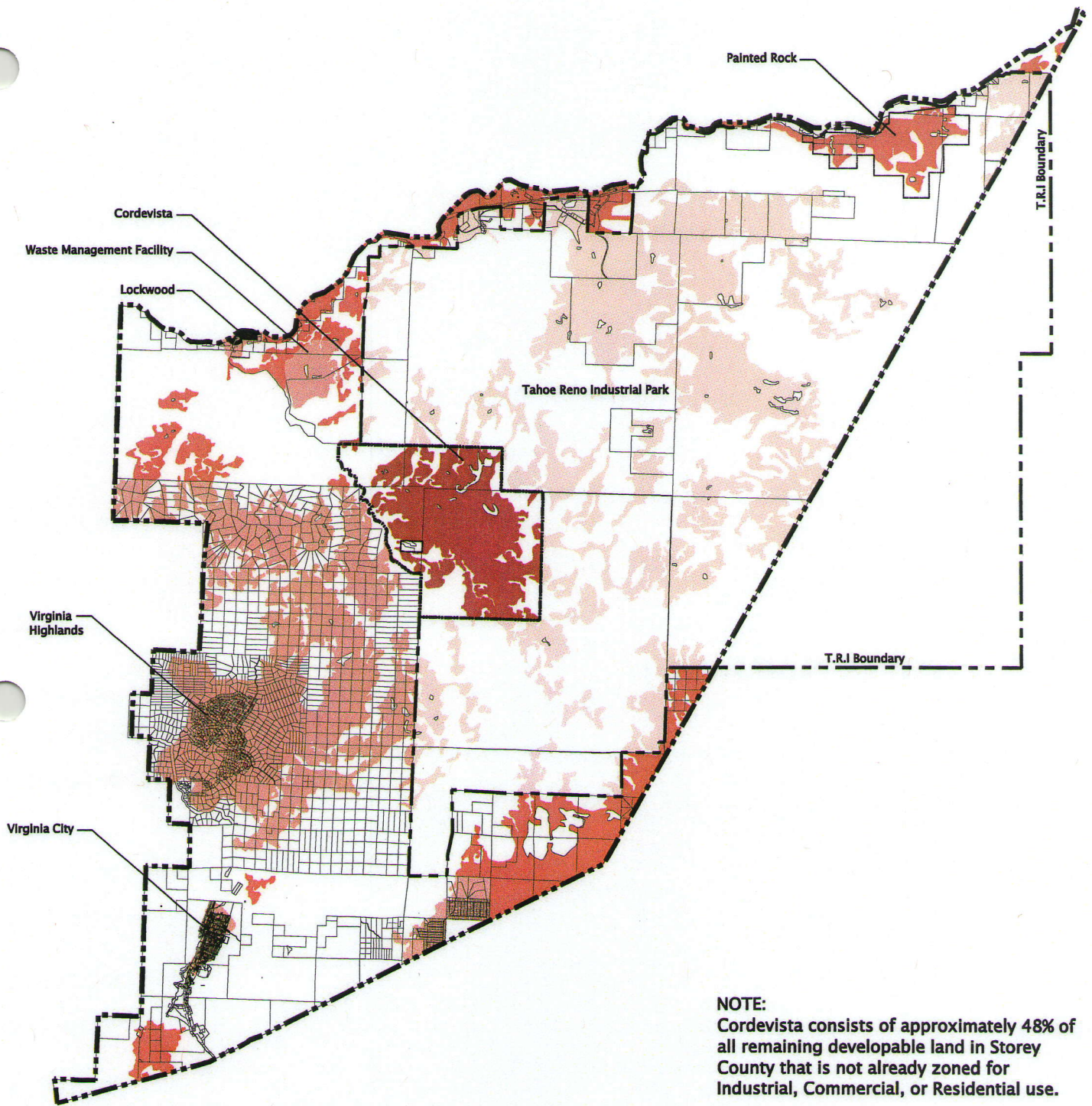


Storey County Slope Map/Remaining Developable Land



NOTE:
 Cordevista consists of approximately 48% of all remaining developable land in Storey County that is not already zoned for Industrial, Commercial, or Residential use.

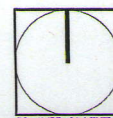
Legend

| | | |
|--|---|--------------------|
| | Storey County | Est. 169,360 Acres |
| | T.R.I. Area (includes Painted Rock property and T.R.I. Property inside Lion County) | 102,000 Acres |
| | Properties that have been Developed, Planned, or Lotted | 18,673 Acres |
| | Remaining Developable Land in Storey County | 11,244 Acres |
| | Cordevista Project/Site | 5,394 Acres |

VH0447

Cordevista

A Master Planned Mixed Use Community



0 4,000 8,000 12,000 16,000